



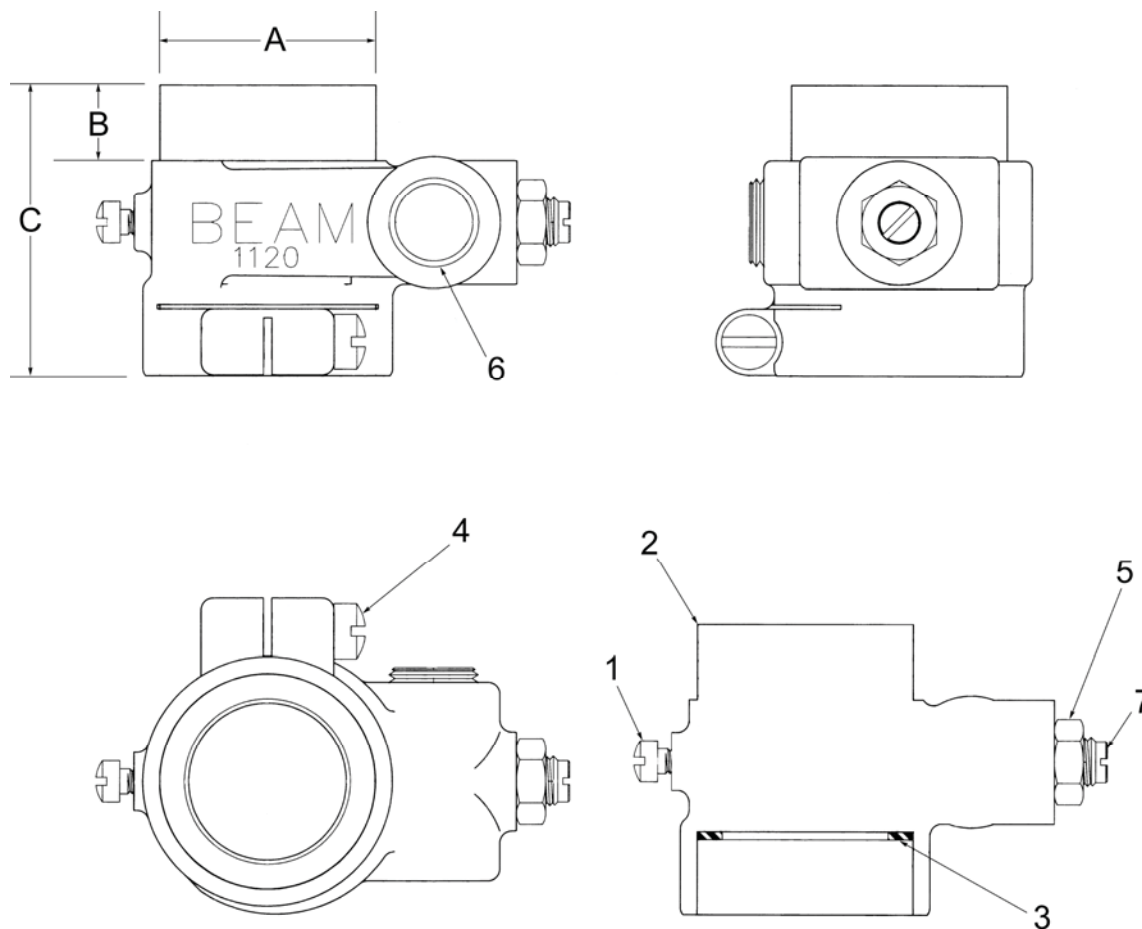
# FUEL METERING

# CARBURETOR ADAPTER W/O VENTURI

## FUEL METERING



### CARBURETOR ADAPTER W/O VENTURI



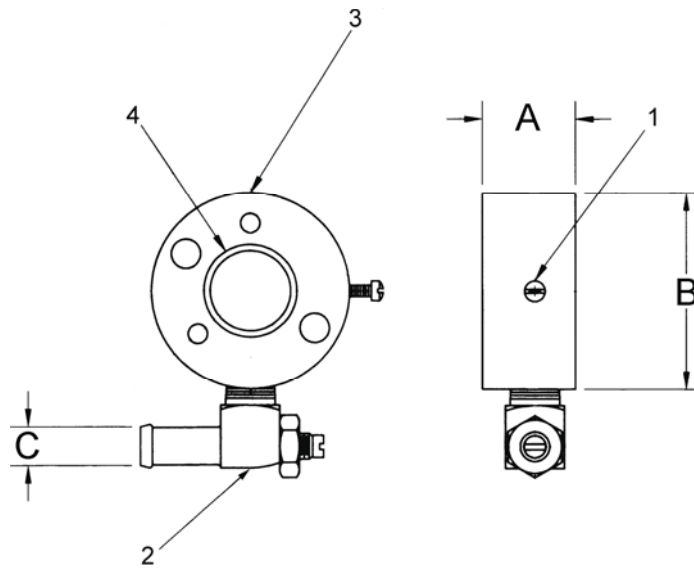
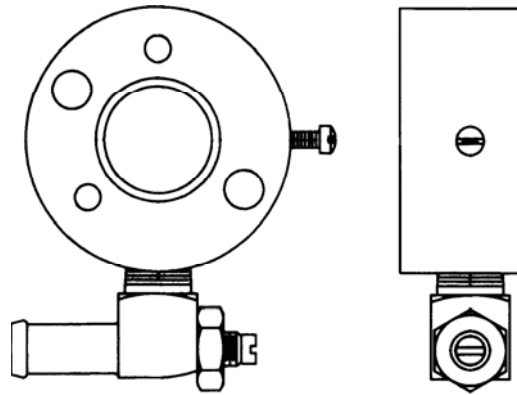
| PART#  | DESCRIPTION               | A<br>DIAMETER     | B<br>HEIGHT<br>(NECK) | C<br>OVERALL<br>HEIGHT |
|--------|---------------------------|-------------------|-----------------------|------------------------|
| 1120-A | Carb Adapter Less Venturi | 1.625"<br>41.3mm  | 14.3mm<br>(.562")     | 55.5mm<br>(2.187")     |
| 1770-S | Carb Adapter w/O Venturi  | 1.82"<br>(46.2mm) | 14.3mm<br>(.562")     | 55.5mm<br>(2.187")     |

#### COMPONENT LIST

| ITEM # | PART # | DESCRIPTION                   |
|--------|--------|-------------------------------|
| 1      | NSS    | Slotted 10-32UNF-2A           |
| 2      | NSS    | Carburetor Adapter            |
| 3      | NSS    | Gasket, Carburetor Airhorn    |
| 4      | NSS    | Screw, machine, Filister Head |
| 5      | NSS    | Nut, Jam (3/8-24UNF-2B)       |
| 6      | NSS    | Plug, Set Screw 3/8 NPT       |
| 7      | NSS    | Screw, Power Adjustment       |

NSS = Not Serviced Separately

**CARBURETOR ADAPTER**



**DIMENSIONS**

| PART# | DESCRIPTION  | A<br>HEIGHT<br>(NECK) | B<br>DIAMETER  | C<br>OD          |
|-------|--------------|-----------------------|----------------|------------------|
| 1450A | Carb Adapter | .94"<br>(23.8mm)      | 2.0"<br>(51mm) | 0.5"<br>(12.7mm) |

**COMPONENTS**

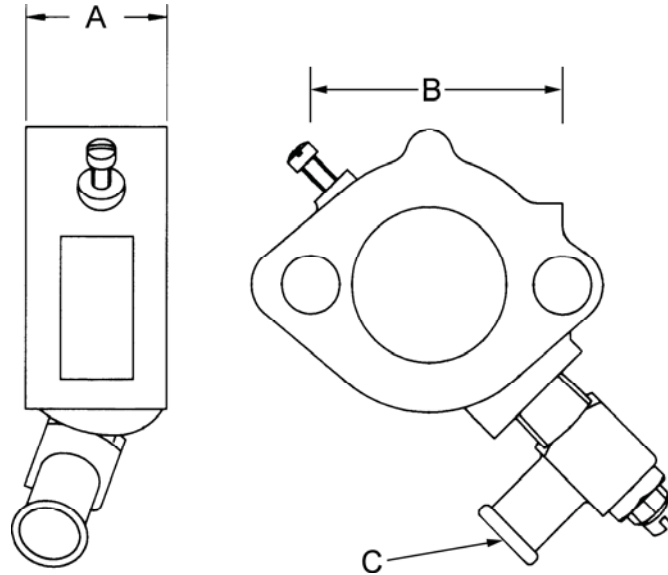
| ITEM# | PART# | DESCRIPTION              |
|-------|-------|--------------------------|
| 1     | NSS   | Screw, Venturi Set       |
| 2     | NSS   | Elbow-Power Adjustment   |
| 3     | NSS   | Body, Carburetor Adapter |
| 4     | NSS   | Venturi                  |

# CARBURETOR ADAPTOR, LESS VENTURI

## FUEL METERING



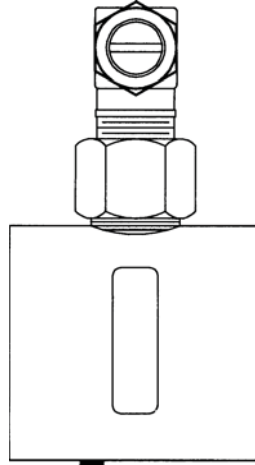
### CARBURETOR ADAPTER, LESS VENTURI



### DIMENSIONS

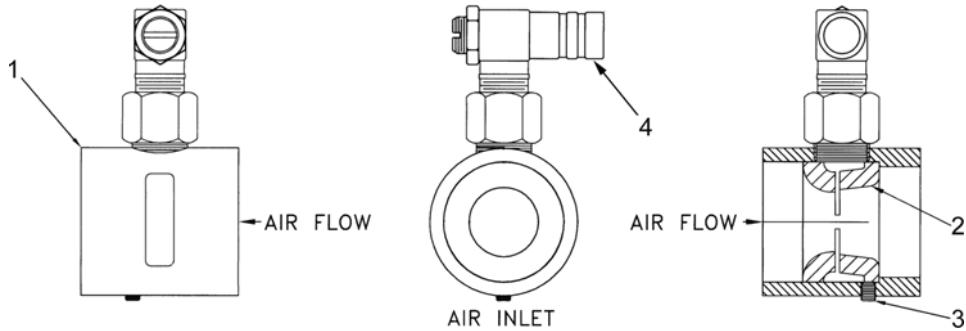
| PART# | DESCRIPTION               | A                 | B                | C                |
|-------|---------------------------|-------------------|------------------|------------------|
|       |                           | HEIGHT            | HOLE SPACING     | OD               |
| 1451  | Carb Adapter Less Venturi | 1.14"<br>(29.0mm) | 2.0"<br>(50.8mm) | 0.5"<br>(12.7mm) |
| 1455  | Carb Adapter Less Venturi | 1.13"<br>(28.6mm) | N/A              | 0.5"<br>(12.7mm) |

**CARBURETOR ADAPTOR**



P/N 200-1330-1

**DIMENSIONS**



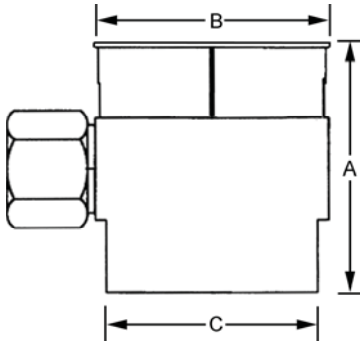
| ITEM# | PART# | DESCRIPTION                                |
|-------|-------|--|
| 1     | NSS   | 2" Dia. Hose Adapter                       |
| 2     | NSS   | Venturi, #30                               |
| 3     | NSS   | Screw, 10-32 x 1/4 Torx Zinc               |
| 4     | NSS   | Power Adjustment Elbow, 5/8 Hose x 3/8 NPT |

# 201 & 204 MODEL ADAPTERS

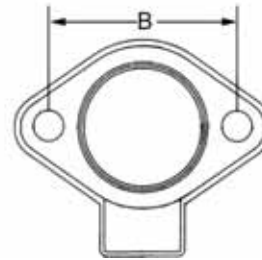
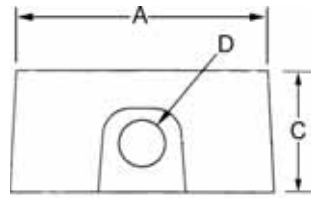
## FUEL METERING



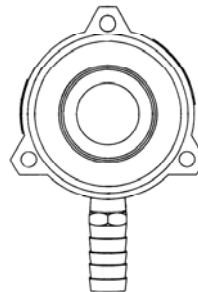
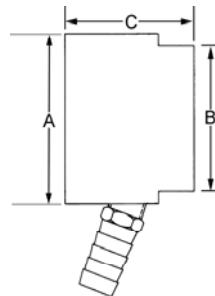
### 201 & 204 MODEL ADAPTERS



| ITEM     | DESCRIPTION  | HEIGHT             | INLET OD         | OUTLET           |       | INLET NPT | VENTURI |
|----------|--|--------------------|------------------|------------------|-------|-----------|---------|
|          |  |                    |                  | OD               | INLET |           |         |
| 200-1330 | Carb Adapter, Hose 2" OD x .375"                               | 2.13"<br>(54.1mm)  | 2.0"<br>(50.8mm) | 2.0"<br>(50.8mm) |       | 3/8"      | #30     |
| 201-1130 | Carburetor Adapter, Air Horn                                   | 2.13"<br>(54.1mm)  | 1.81<br>(46.0mm) | 2.0"<br>(50.8mm) |       | 3/8"      | #30     |
| 204-44   | Carburetor Adapter   | 2.725"<br>(69.9mm) | 1.57"<br>(40.0") | 2.0"<br>(50.8mm) |       | 1/4"      | #24     |
| 204-58   | Adapter, Flange mounting, 1.375" x 1.13", 1/4 NPT              | 1.22<br>(31.0mm)   | N/A              | 0.94             |       | 1/4"      | #24     |
| 204-67   | Adapter, Air cleaner mounting, 1.375" x 1.737", 1/4 NPT, 1.58  | 2.725"<br>(69.9mm) | 1.57"<br>(40.0") | 2.0"<br>(50.8mm) |       | 1/4"      | #26     |
| 204-82   | Adapter, Carb, 1-1/2" Flange mounting, 1.375" x 1.13", 1/4 NPT | 1.22<br>(31.0mm)   | N/A              | 0.94             |       | 1/4"      | #28     |

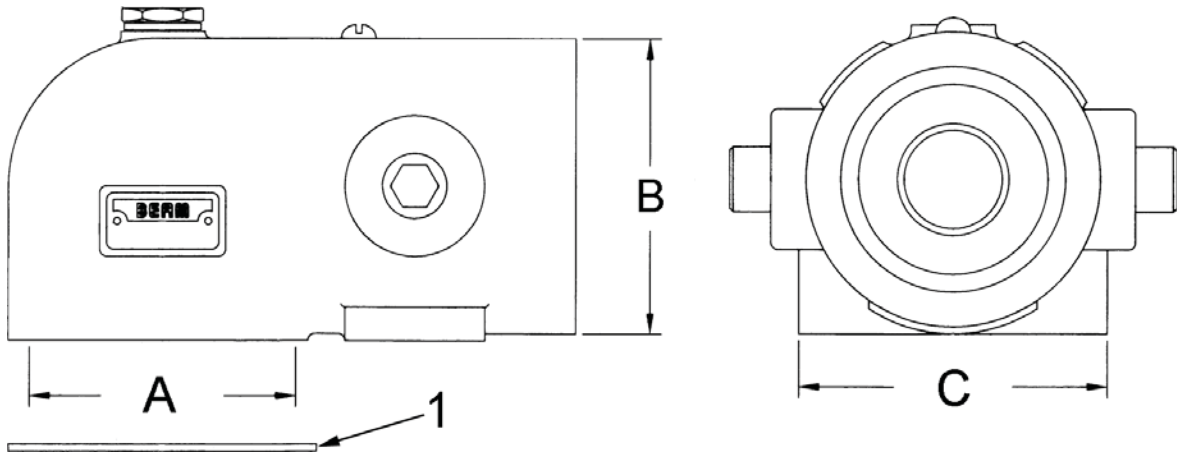


| PART#  | DESCRIPTION  | INLET OD          | HOLE SPACING     | HEIGHT            | INLET NPT | VENTURI |
|--------|--|-------------------|------------------|-------------------|-----------|---------|
|        |  |                   |                  |                   |           |         |
| 204-27 | Adapter, Flange mounting (2), 1.375" X 1.12" 1/4 NPT | 1.72"<br>(43.7mm) | 2.0"<br>(50.8mm) | 1.25"<br>(31.8mm) | 1/4"      | #22     |



| PART#  | DESCRIPTION   | INLET OD | OUTLET |      | HEIGHT                     | INLET | VENTURI |
|--------|---|----------|--------|------|----------------------------|-------|---------|
|        |   |          | OD     | OD   |                            |       |         |
| 204-36 | Adapter, Air cleaner mounting, 2.562" X 1.812", 1/4 NPT | 2.05"    | 2.6"   | 1.81 | 1/4" NPT<br>1/2" HOSE BARB | #26   |         |

**CARBURETOR ADAPTOR**



**DIMENSIONS**

| PART#  | DESCRIPTION        | A                 | B                | C                 |
|--------|--------------------|-------------------|------------------|-------------------|
|        |                    | OUTLET ID         | INLET OD         | WIDTH             |
| 4C-314 | CARBURETOR ADAPTER | 2.62"<br>966.5mm) | 2.0"<br>(50.8mm) | 2.75"<br>(69.9mm) |

**COMPONENTS**

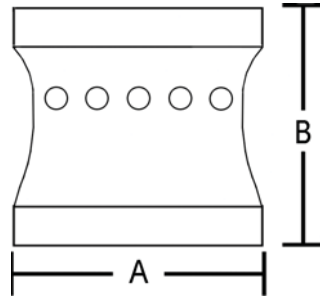
| ITEM# | PART#   | DESCRIPTION                |
|-------|---------|----------------------------|
| 1     | 2G-113B | Gasket, Carburetor Airhorn |

# 111 & 113 SERIES VENTURIS

## FUEL METERING



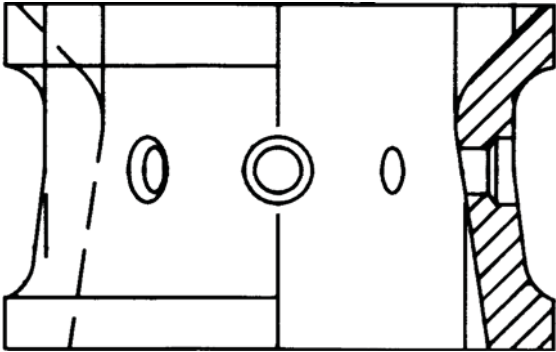
### 111 & 113 SERIES VENTURIS



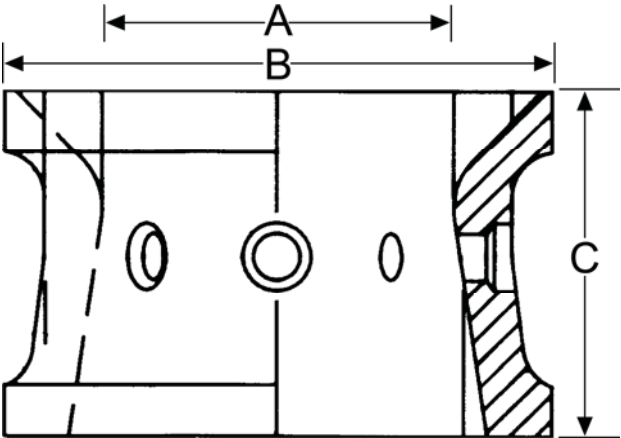
|        | A                | B               | C       |
|--------|------------------|-----------------|---------|
| PART # | DIAMETER O.D.    | OVERALL HEIGHT  | VENTURI |
| 111-20 | 23.8 mm (.9375") | 19 mm (.75")    | 20      |
| 113-18 | 31.7 mm (1.25")  | 31.7 mm (1.25") | 18      |
| 113-20 | 31.7 mm (1.25")  | 31.7 mm (1.25") | 20      |
| 113-22 | 31.7 mm (1.25")  | 31.7 mm (1.25") | 22      |
| 113-26 | 31.7 mm (1.25")  | 31.7 mm (1.25") | 26      |



**134 SERIES VENTURI**

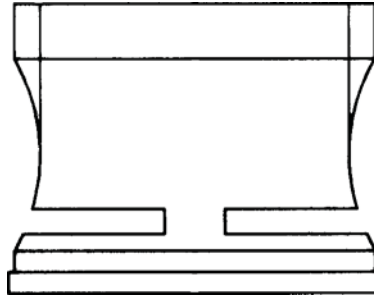


**DIMENSIONS**

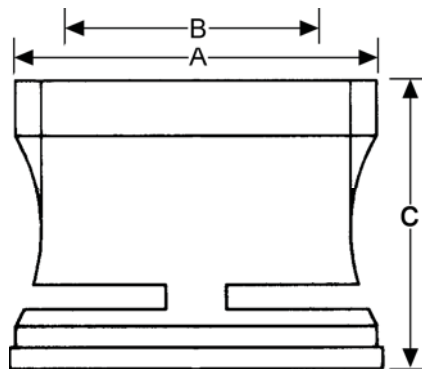


|        | A                 | B                | C                |
|--------|-------------------|------------------|------------------|
|        | INSIDE            | OUTSIDE          |                  |
| PART # | DIA.              | DIA.             | HEIGHT           |
| 134-28 | 0.875<br>(22.2mm) | 1.5"<br>(38.1mm) | 0.95<br>(24.1mm) |

VENTURI 220-00-08

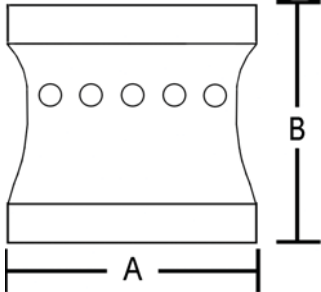


DIMENSIONS



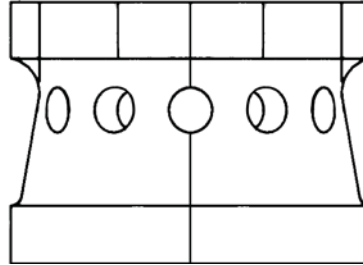
|         | A                  | B                  | C                 |
|---------|--------------------|--------------------|-------------------|
|         | OUTSIDE            |                    |                   |
| PART#   | DIA.               | INSIDE DIA.        | HEIGHT            |
| 225A-34 | .935"<br>(23.75mm) | .625"<br>(15.88mm) | .75"<br>(19.05mm) |

**222 SERIES VENTURI**

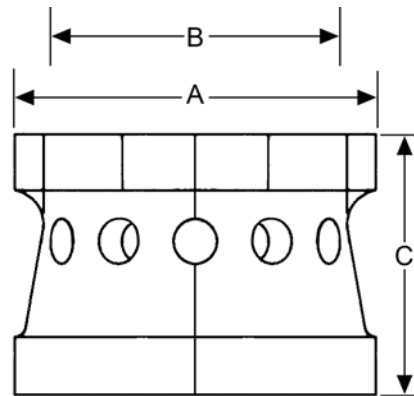


|           | A                   | B                  | C       | D        |
|-----------|---------------------|--------------------|---------|----------|
|           | OUTSIDE             | OVERALL            |         |          |
| PART #    | DIA.                | HEIGHT             | VENTURI | MATERIAL |
| 222-00-10 | 34.9 mm<br>(1.375") | 25.4 mm<br>(1.00") | 10      | Aluminum |
| 222-00-14 | 34.9 mm<br>(1.375") | 25.4 mm<br>(1.00") | 14      | Aluminum |

**VENTURI 225A-34**



**DIMENSIONS**

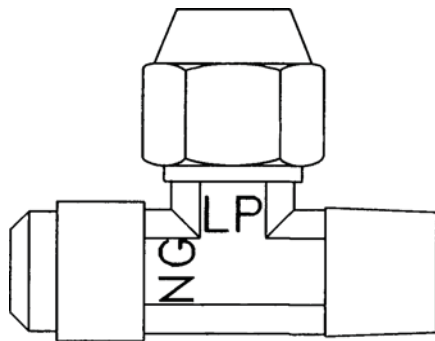


|         | <b>A</b>           | <b>B</b>            | <b>C</b>          |
|---------|--------------------|---------------------|-------------------|
|         | <b>OUTSIDE</b>     |                     |                   |
|         | <b>DIA.</b>        | <b>INSIDE DIA.</b>  | <b>HEIGHT</b>     |
| 225A-34 | 1.99"<br>(50.78mm) | 1.062"<br>(26.98mm) | 1.44"<br>(36.6mm) |

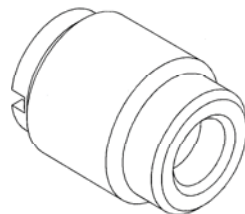
### CHOICE FUEL<sup>®</sup> CUSTOM FUEL OUTLET FITTINGS

#### DESCRIPTION

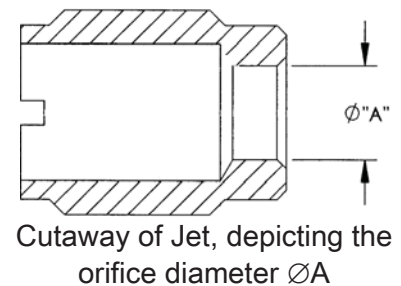
The Choice Fuel<sup>®</sup> Custom Outlet Fitting was designed with the installer in mind. By easily moving the vapor hose coming from the regulator from one leg of the tee to the other, the fuel system can be run on either LPG or Natural Gas. Any combination of jet sizes can be used for a wide range of engine displacement for proper fuel metering to desired air/fuel ratios for either fuel.



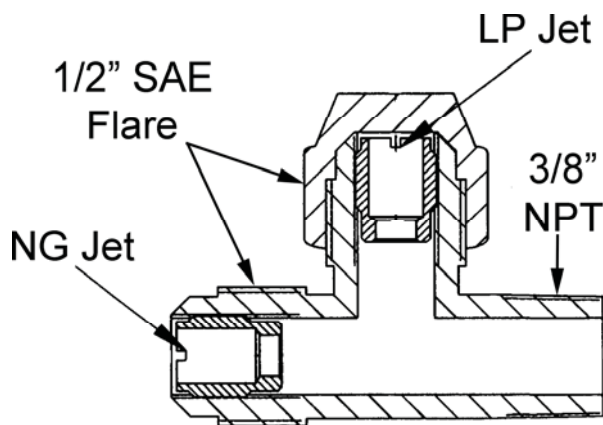
Custom Fuel DUAL Outlet Tee,  
P/N AF4-31175-XXX. View from the outside.  
Note the fuel labels: LP=LPG; NG=Natural Gas



Jet, Isometric View



Cutaway of Jet, depicting the orifice diameter ØA



Cutaway view showing the jets installed.

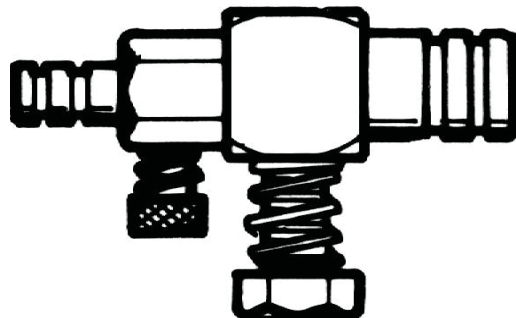
| PART NO.     | Ø "A" | PART NO.     | Ø "A" |
|--------------|-------|--------------|-------|
| J1-30655-025 | 4.2   | J1-30655-021 | 5.9   |
| J1-30655-026 | 4.3   | J1-30655-022 | 6.0   |
| J1-30655-027 | 4.4   | J1-30655-023 | 6.1   |
| J1-30655-028 | 4.5   | J1-30655-024 | 6.2   |
| J1-30655-029 | 4.6   | J1-30655-019 | 6.3   |
| J1-30655-030 | 4.7   | J1-30655-010 | 6.4   |
| J1-30655-031 | 4.8   | J1-30655-011 | 6.5   |
| J1-30655-032 | 4.9   | J1-30655-012 | 6.6   |
| J1-30655-033 | 5.0   | J1-30655-003 | 6.7   |
| J1-30655-004 | 5.1   | J1-30655-001 | 6.8   |
| J1-30655-005 | 5.2   | J1-30655-013 | 6.9   |
| J1-30655-006 | 5.3   | J1-30655-014 | 7.0   |
| J1-30655-002 | 5.4   | J1-30655-015 | 7.1   |
| J1-30655-007 | 5.5   | J1-30655-016 | 7.2   |
| J1-30655-008 | 5.6   | J1-30655-017 | 7.3   |
| J1-30655-009 | 5.7   | J1-30655-018 | 7.4   |
| J1-30655-020 | 5.8   | J1-30655-034 | 8.0   |

# 130 SERIES LOAD BLOCKS

## FUEL METERING



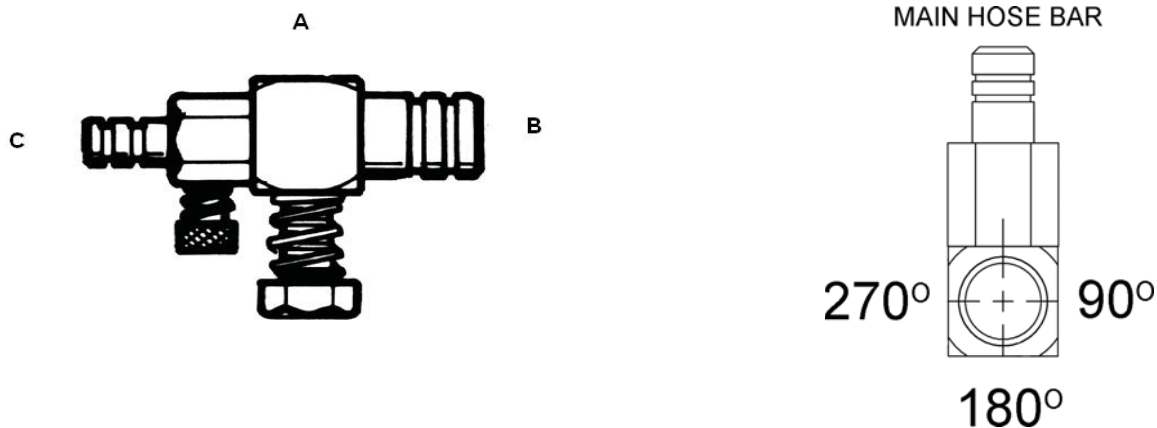
### 130 SERIES LOAD BLOCKS



#### DESCRIPTION

There are different styles of load blocks (with and without idle systems), to match your needs, when using fuel tubes or carburetor adapters that require a separate load block. These load blocks offer you great versatility, as they can be mounted in any direction either at the carburetor or on the fuel regulator.

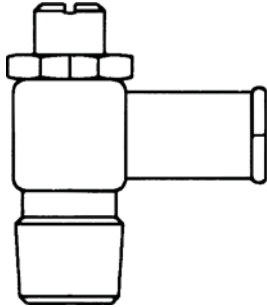
#### DIMENSIONS



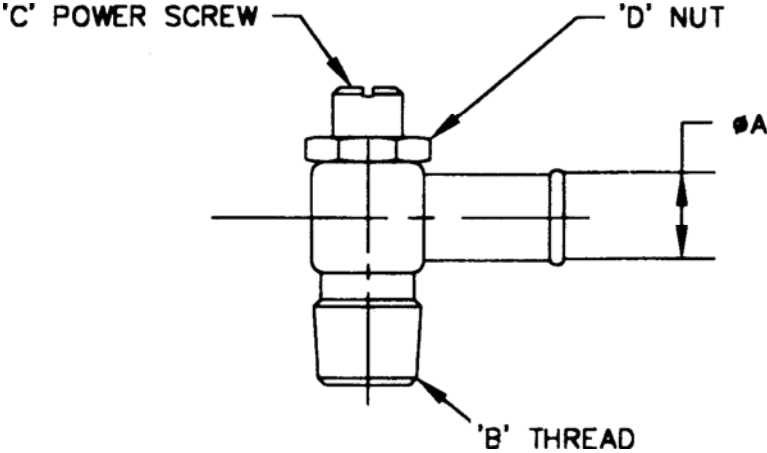
#### LOAD BLOCKS

| PART NUMBER | A           | B         | C         | POSITION |
|-------------|-------------|-----------|-----------|----------|
|             | THREAD SIZE | TUBE SIZE | TUBE SIZE | IDLE     |
| 133-03      | 1/4 NPT     | 3/8"      | 1/4"      | 180°     |
| 133-08      | 1/4 NPT     | 1/2"      | 1/4"      | 90°      |
| 133-17      | 1/4 NPT     | 3/8"      | 1/4"      | 90°      |

ELBOW, POWER ADJUSTMENT



DIMENSIONS



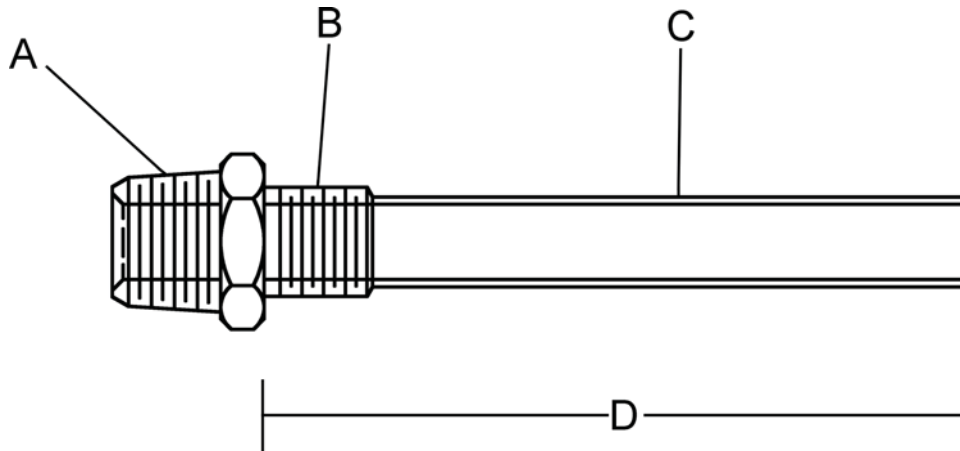
|           | A     | B           | C     | D   | E        |
|-----------|-------|-------------|-------|-----|----------|
|           |       |             | POWER |     |          |
| ITEM #    | DIA.  | THREAD SIZE | SCREW | NUT | MATERIAL |
| 4H-204B-1 | 0.5"  | 1/4" NPT    | NSS   | NSS | BRASS    |
| 4H-305Z   | 0.63" | 1/2" NPT    | NSS   | NSS | ZINC     |

# 100 SERIES FUEL TUBES

## FUEL METERING



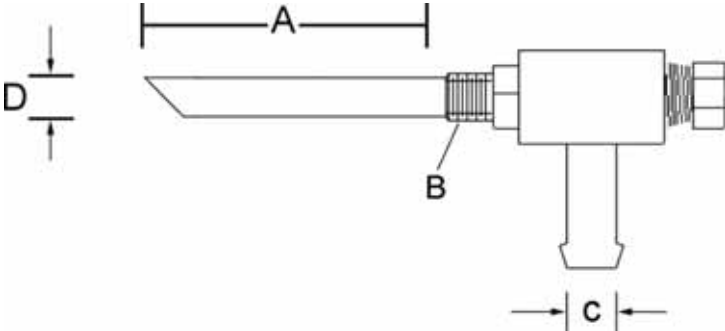
### 100 SERIES FUEL TUBES



|        | A            | B         | C             | D      |
|--------|--------------|-----------|---------------|--------|
|        | CONNECTOR    | ATTACHING | TUBE DIAMETER | TUBE   |
| PART # | THREAD (NPT) | THREAD    | (O.D.)        | LENGTH |
| 100-29 | 1/8"         | 8mm       | 0.26"         | 2.03"  |
| 100-30 | 1/8"         | 8mm       | 0.26"         | 2.12"  |

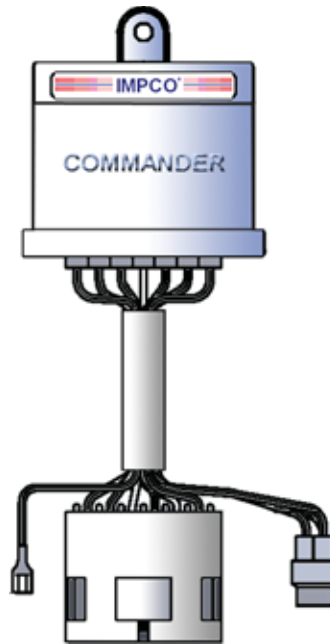


**2F SERIES SPUD IN TUBES**



|         | A                | B        | C              | D              |
|---------|------------------|----------|----------------|----------------|
|         |                  | THREAD   | INLET TUBE     |                |
| PART #  | TUBE LENGTH      | SIZE     | DIA.           | TUBE DIA.      |
| 2F-125  | 50.8 mm (2.0")   | 3/8"-24  | 9.5 mm (.375") | 7.9 mm (.312") |
| 2F-247  | 63.5 mm (1.25")  | 5/16"-25 | 9.5 mm (.375") | 5.7 mm (.228") |
| 2F-256  | 63.5 mm (1.25")  | 5/16"-26 | 9.5 mm (.375") | 5.7 mm (.228") |
| 2F-275  | 53.9 mm (2.125") | 5/16"-27 | 9.5 mm (.375") | 5.7 mm (.228") |
| 2F-275A | 53.9 mm (2.125") | 5/16"-28 | 9.5 mm (.375") | 5.7 mm (.228") |

| PART # | DESCRIPTION |
|--------|-------------|
| 2F-249 | GLAND NUT   |

**COMMANDER Oz AIR/FUEL CONTROL UNIT***IMPCO ECM Commander***DESCRIPTION**

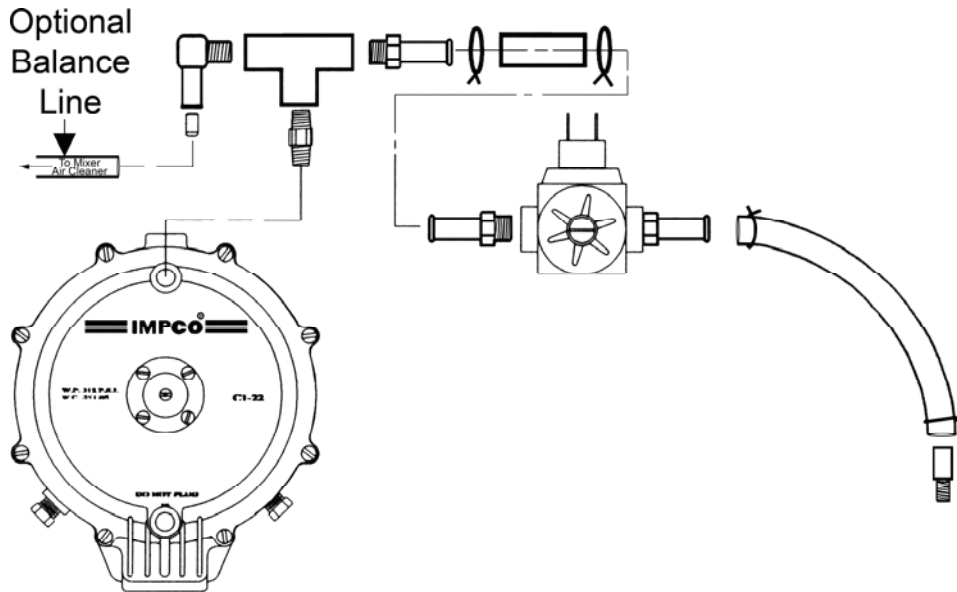
The Commander is an advanced digital closed-loop fuel control processor for alternate fuels. The EK-CDP-1 Kit contains all of the electrical components required to convert your IMPCO open-loop fuel system to a state-of-the-art closed loop fuel control technology and supplies the required electrical parts to convert IMPCO open-loop fuel systems to closed-loop feedback control. The Commander controller is designed to reduce overall exhaust emissions without the use of catalytic converters. The compact construction provides a sealed enclosure for operation in harsh industrial engine environments. The small electronic module controls fuel pressure based on engine speed and rich/lean status from the oxygen sensor. The Commander's microprocessor reads and calculates this data to provide a precise stoichiometric air/fuel ratio. The IMPCO Commander delivers consistent exhaust emissions, drivability and fuel economy at a reasonable cost. The controller is compatible with all IMPCO feedback mixers.

| MODEL/SERIES<br>CARBURETOR | RECOMMENDED AIR GAS VALVE                 |
|----------------------------|---|
| 55 Series                  | AV1-14925 with "O" Series type converter. |
| 100/125 Series             | AV1-1447-2                                |
| 125M-10 Series, Dual Fuel  | AVI-1447-4                                |
| 200/225 Series             | AV1-1245 & AV1-1245-2                     |
| 300A 20 Series             | V2-49                                     |
| 300A 50/70 Series          | AV2-50                                    |
| 425 Series                 | AV1-1651-2                                |



COMPONENTS

| PART#     | DESCRIPTION         | QTY |
|-----------|---------------------|-----|
| EK-CDP-1  | OZ Commander Kit    | 1   |
| CDP-1DX-4 | Microprocessor 4Cyl | 1   |
| CDP-1DX-6 | Microprocessor 6Cyl | 1   |



Typical Setup for a Commander

EK-CDP-1 COMPONENT PART LIST

| TEM# | PART#         | DESCRIPTION                           | QTY |
|------|---------------|---------------------------------------|-----|
| 1    | AE3-31273-001 | Controller, CDPOZ Electronic          | 1   |
| 2    | NSS           | Wire Harness Assay, Commander         | 1   |
| 3    | NSS           | Oxygen Sensor Boss 1018               | 1   |
| 4    | NSS           | Oxygen Sensor With Connector          | 1   |
| 5    | J1-21*        | Jet, Feed Back Bleed                  | 1   |
| 6    | F4-12*        | Fitting, 1/8" NPT 3/8" Hose 90EI Nyl  | 1   |
| 7    | NSS*          | Fitting, 1/8" NPT Female Tee Brass    | 1   |
| 8    | NSS*          | Hose, 3/8" ID 2"L Fuel/Oil            | 1   |
| 9    | NSS*          | Clamp, Hose, .69" OD                  | 2   |
| 10   | NSS*          | FCV Solenoid Assay, IMPCO             | 1   |
| 11   | NSS*          | Fitting, 1/8" NPT 3/8" Hose Brass     | 2   |
| 12   | NSS*          | Hose, Vacuum 1/4" ID 4' Length        | 1   |
| 13   | F4-2*         | Fitting, 1/4" Unf 1/4" Hose Vac Nip   | 1   |
| 14   | NSS*          | Fitting, 1/8" NPT 1/4" Hose Nip Brass | 1   |
| 15   | NSS*          | Fitting, 1/8" NPT Hex Nip Brass       | 1   |

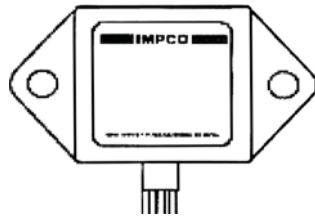
# FUEL CONTROL PARTS

## FUEL METERING



### FUEL CONTROL PARTS

#### FUEL CONTROL PROCESSORS

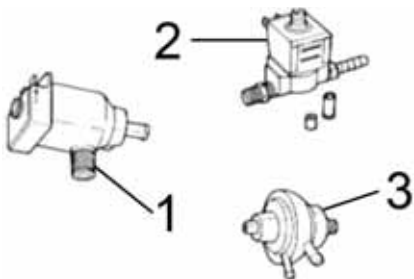


| ITEM #    | DESCRIPTION            |
|-----------|------------------------|
| AE2-19316 | Assembly, ADP Ford QVM |
| EK-CDP-1  | Commander Kit          |
| CDP-1DX-4 | Microprocessor 4 Cyl.  |
| CDP-1DX-6 | Microprocessor 6 Cyl.  |

#### MIXTURE CONTROL OPTIONS

| ITEM #   | DESCRIPTION  |
|----------|--|
| AB1-16   | Line Load Adjuster-Cat   |
| AB1-32   | Auxiliary line power adjuster, 1 NPT                               |
| AB1-54   | Gas metering valve Todd meter, 1 NPT                               |
| AC1-74   | Tower ass'y, adjusting, for PEV, PJ & PK regulators                |
| J1-21    | Jet, 2.5 mm (0.100"), feedback bleed                               |
| R1-29    | Ring, shim, 100 series mixers, to lean fuel mixtures               |
| R1-30    | Ring, shim, 200 series mixers, to lean fuel mixtures               |
| S2-35    | Spring, JB/JK/Cobra series, Neg. 0.37 kPa (Neg. 1.50" H2O)         |
| S2-37    | Spring, secondary, PE, 0.92-1.6 kPa (3.7-6.5" H2O), brown          |
| S2-38    | Spring, JO/KO/Cobra series, Neg. 0.12 kPa (Neg. 0.50" H2O), orange |
| S2-106   | Spring, regulator, 0.50-0.70 kPa (2.0-2.8" H2O), zinc              |
| S2-109   | Spring, regulator, PEV, 0.67-0.96 kPa (2.7-3.85" H2O), white       |
| V3-30958 | Valve, Check Diaphragm   |
| AW-25412 | Fuel Switch Assy (Ford QVM)  |

#### SOLENOIDS, SENSORS & FUEL CONTROL PARTS



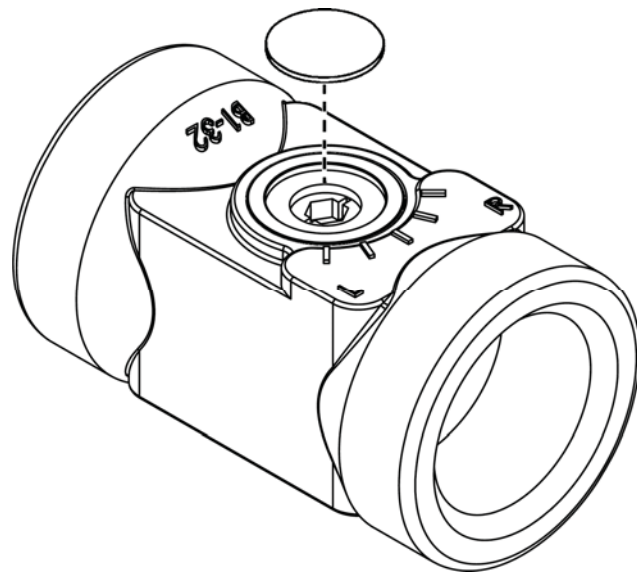
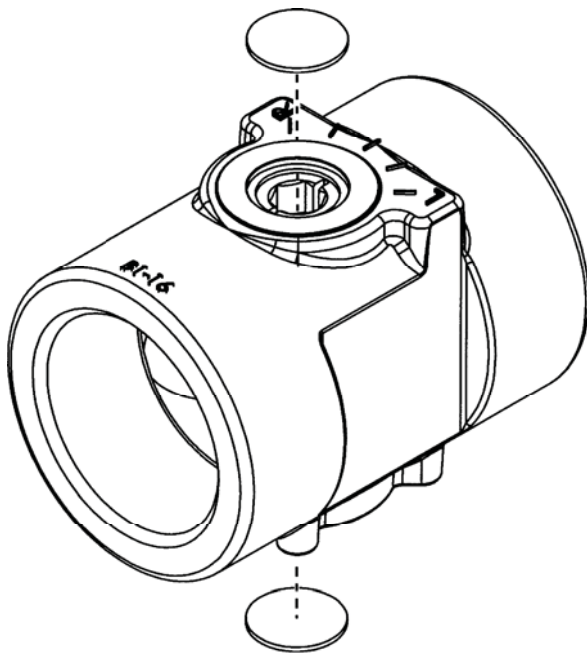
| ITEM# | PART# | DESCRIPTION   |
|-------|-------|---|
| 1     | SV    | Valve, Electric Solenoid Start  |
| 2     | FCV   | Fuel Ctrl Vlve, Comp. Feedback<br>(Also see page on FCV Solenoid Kit) |
| 3     | VPV   | Vacuum Power Valve  |

\*Kit HK-54702-001 is available which includes the FCV valve and the components necessary to replace P/N VCS. Refer to TSB-196.



IN LINE POWER VALVES AB1-16 AND AB1-32

Both AB1-16 and AB1-32 include internal O-ring seals for pressure ratings up to 30 psig and are available with tamper proof plugs for compliance with tamper resistant applications.



*AB1-16 Shown with Tamper Resistant Plugs*

*AB1-32 Shown with Tamper Resistant Plug*

The AB1-16 valve can be adjusted using a 5/16" or 8mm hex key from either the top or bottom of the valve. The AB1-32 valve is adjusted using a 6mm hex key from the top. Both valves are available with or without the tamper resistant plug. Refer to the following table for features, plugs and part number ordering information:

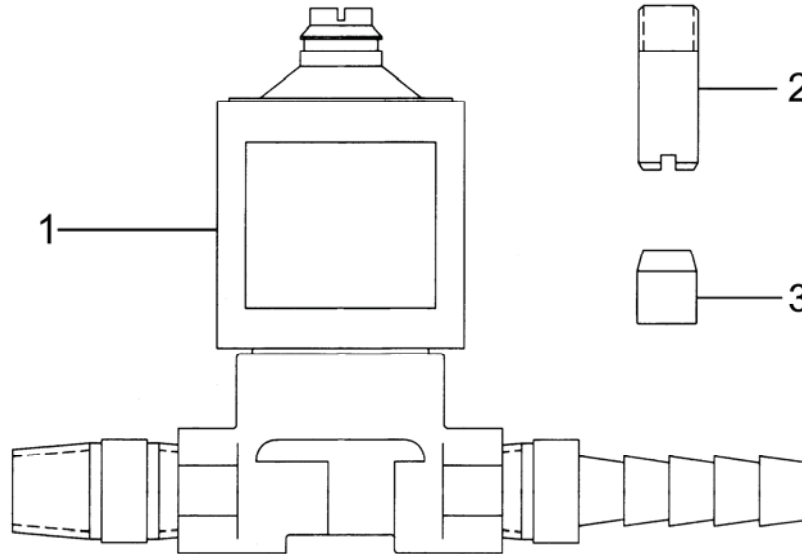
| Description                           | Part Number | Inlet & Outlet Ports | Replacement Tamper Resistant Plugs | Qty of Plugs Included |
|---------------------------------------|-------------|----------------------|------------------------------------|-----------------------|
| In Line Power Valve                   | AB1-16      | 1 1/4" Female NPT    | P3-17956-20                        | 0                     |
| In Line Power Valve, Tamper Resistant | AB1-16-2    |                      |                                    | 2                     |
| In Line Power Valve                   | AB1-32      | 1" Female NPT        |                                    | 0                     |
| In Line Power Valve, Tamper Resistant | AB1-32-2    |                      |                                    | 1                     |

# FCV SOLENOID KIT

## FUEL METERING



### FCV SOLENOID KIT



### DESCRIPTION

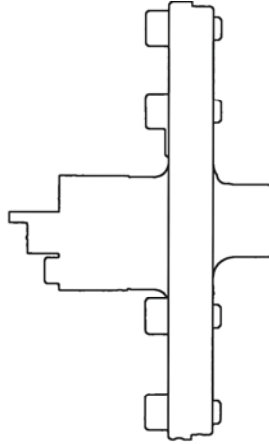
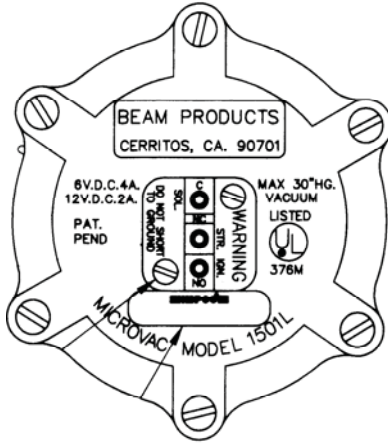
The FCV Solenoid Kit is a 12 VDC valve used to control vacuum supplied between the regulator vent and the air valve vacuum port. It is typically used with an IMPCO Commander Control unit in a closed loop system.

| ITEM# | PART# | DESCRIPTION                 |
|-------|-------|-----------------------------|
| 1     | FCV-7 | Fuel Control Valve Solenoid |

### ACCESSORIES

| ITEM# | PART# | DESCRIPTION                  |
|-------|-------|------------------------------|
| 2     | F4-2  | Fitting 1/4" 28 to 1/4" hose |
| 3     | J1-21 | Feed Back Bleed              |

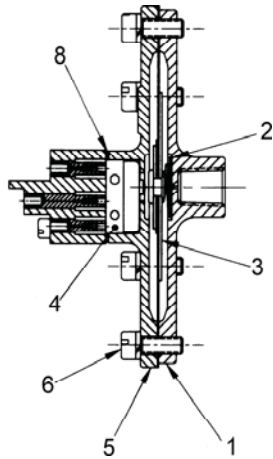
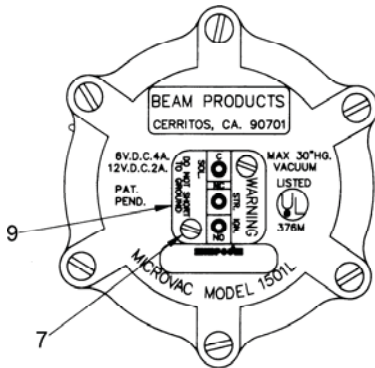
### VACUUM SWITCH



| PART #   | DESCRIPTION                   |
|----------|-------------------------------|
| 1501-28A | Microswitch, W/Match Spring   |
| 1501-PA  | Vac Switch Kit W/Wires & Term |
| 1501-RK  | Repair Kit For 1501-L         |

#### P/N 1501-L

Certification: UL (AU1682)



| ITEM# | PART#      | DESCRIPTION               |
|-------|------------|---------------------------|
| 1     | 1501-21    | Cover, Back               |
| 2     | 1501-5A*   | Spring, compression       |
| 3     | 1501-6*    | Diaphragm-Microvac        |
| 4     | 1501-28*   | Casting, Front Cover      |
| 5     | 1501-23    | Screw, 10-32 UNF 2A .50"L |
| 6     | 103208-FS* | Screw, 10-32 UNF 2A .62"L |
| 7     | 063207-B*  | Screw 6-32 UNF .44L       |
| 8     | 1501-24*   | Shim, Microswitch         |
| 9     | NSS*       | Adapter, Switch Terminal  |

\*Included in repair kit 1501-RK

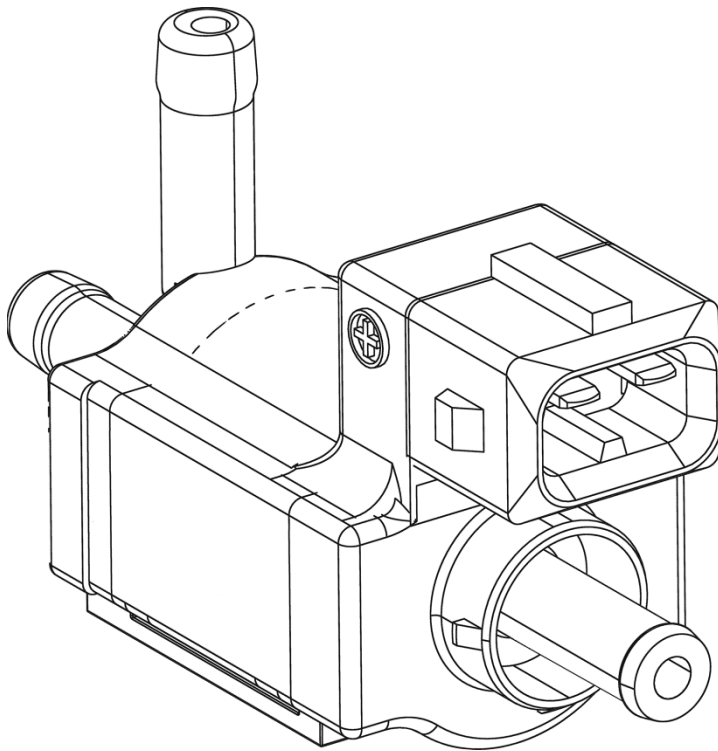
# VACUUM SWITCH

## FUEL METERING

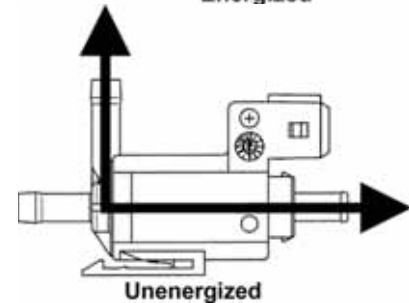
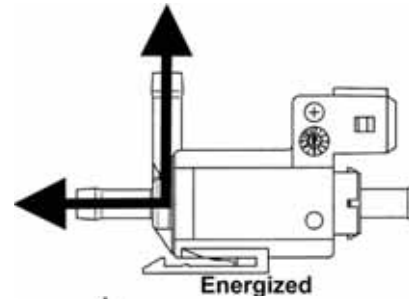


### FUEL CONTROL VALVE

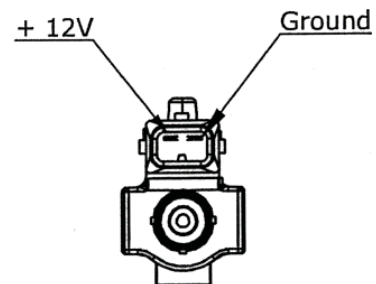
A kit, P/N HK-54702-001 includes a new valve, P/N FCV-54700-001 and the hardware necessary to replace the Vacuum Control Solenoid Valve, IMPCO P/N VCS (no longer available). The specifications for the new valve are shown below:



Fuel Control Valve P/N FCV-54700-001



Flow when energized and unenergized



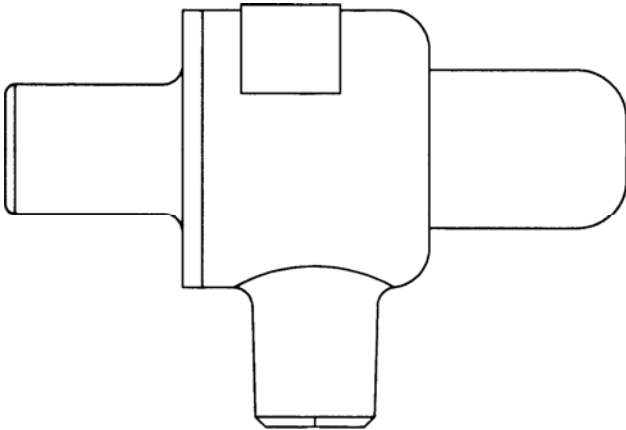
End view, showing the polarity of the connector pins

### SPECIFICATIONS

- Voltage: ..... 12V Nominal; Range: 10.8-16V
- Resistance:..... 23.0 +/-1. 2Ω
- Current: ..... ≤0.72A @ 12V, -40°C/F 100% duty cycle
- Operating Temperature: ..... -22°to 266°F (-30° to 130°C)
- Vibration Resistance: ..... Max 6g @ 20-350Hz
- Pressure Maximum ..... 4.3 psi (30 kPa)  
(Rated on vertical Hose Nipple only)
- Hose Nipple Diameter (all three) ... 6.0mm



**REGULATOR CONTROL VALVE**



**P/N RCV-15834**

The regulator check valve is designed to accelerate the movement of the regulator diaphragm on closed loop applications in order to ensure sufficient fuel for high load and/or high transient throttle requirements. This device is particularly useful to help prevent induction backfire.

**DIMENSIONS**

